



VINLEND



**BALL VALVE
SERIES**
球阀系列

国标不锈钢浮动球阀

GB Stainless steel floating ball valve

结构特点 Structure characteristics

浮动软密封不锈钢球阀用于PN16~PN63的各种管路上，用于截断或接通管路中的介质，选用不同的材质，可分别适用于水、蒸汽、油品、液化气、天然气、煤气、醋酸、氧化性介质、尿素等多种介质。

a、在各种阀门中，球阀的流动阻力最小，全径球阀打开时，球体通道、阀体通道和连接管径相等并成一直径，介质几乎可以毫无损失的流过。

b、球阀旋转90°即可全关全开，启闭迅速。与相同规格的闸阀、截止阀比较，球阀体积小、重量轻、便于管道安装。

Soft floating seal stainless steel ball valve used for PN16 ~ PN63 various piping, used to truncate or on line in the medium, choose no material, can be respectively suitable for water, steam, oil, liquefied petroleum gas, natural gas, coal gas, acetic acid, oxidizing medium, urea, and other media.

A, in all kinds of valve, ball valve flow resistance of the smallest, full bore ball valve is opened, the sphere channels, the body and connected to equal diameter and diameter, flow medium can be almost no losses.

B, ball valve can be rotated 90° seated fully open, opening and closing fast. Compared with the same specifications of the gate valve, globe valve, ball valve, small volume, light weight, easy to pipeline installation.

标准与规范 Standards and norms

设计标准 Design standard	结构长度 Face to Face	法兰连接尺寸 Flange End	试验与检验 Test & Check	压力-温度 Pressure-Temp.
GB/T 12237 API6D	GB/T 12221	JB/T 79 HG20592	JB/T 9092 GB/T 13927	GB/T 12224 ASME B16.34

性能参数 performance parameters

序号 NO.	项目名称 Project name	项目名称 Project name			
		PN16	PN25	PN40	PN64
1	公称压力 (MPa)	1.6	2.5	4.0	6.4
2	壳体强度试验压力 (MPa) Shell strength test pressure	常温下公称压力的1.5倍 1.5 Times the nominal pressure at room temperature			
3	高压密封试验压力 (MPa) High pressure seal test pressure	常温下公称压力的1.1倍 1.1 Times the nominal pressure at room temperature			
4	常温下工作压力 (MPa) Operating pressure at room temperature	≤1.6	≤2.5	≤4.0	≤6.4

主要零件材料 Materials for Main Parts

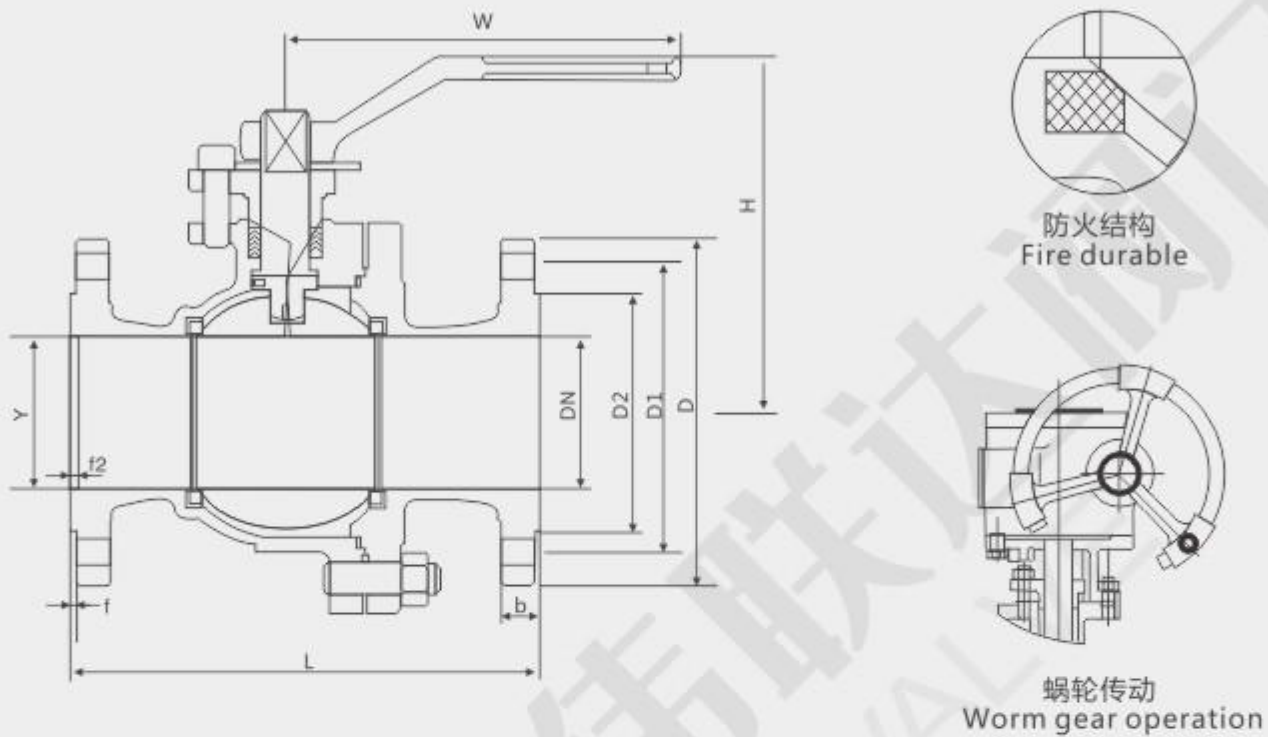
名称 Name	材料 Material								
阀体/阀盖 Body/Bonnet	CF8	CF3	CF8M	CF3M	WCB	LCB	WC6	WC9	C5
球体 Ball	CF8	CF3	CF8M	CF3M	WCB Hcr	CF8	CF8	CF8	CF8
阀杆 Stem	F304	F304L	F316	F316L	2CR13	F304	F304	F304	F304
阀座 Seat	PTFE/PPL/304								
填料/垫片 Packing/Gasket	PTFF					石墨 Graphite			
螺栓 Bolt	不锈钢 Stainless Steel					35CrMoA			
螺母 Nut	不锈钢 Stainless Steel					45、35CrMoA			
手柄 Handle	铸钢 Cast Steel								

国标法兰球阀
GB Flange ball valve

A

球阀系列
Ball valve series

Q41/641/941F-16C/P



PN16 国标法兰球阀

单位Unit:mm

公称通径 DN	主要外形和连接尺寸Main external and connecting dimensions									WT (kg)
	L	D	D1	D2	b	f	Z-Φd	H	W	
15	130	95	65	45	14	2	4-Φ14	78	140	3
20	140	105	75	55	14	2	4-Φ14	84	160	4
25	150	115	85	65	14	2	4-Φ14	95	180	5
32	165	135	100	78	17	2	4-Φ18	150	250	9
40	180	145	110	85	17	2	4-Φ18	150	300	11
50	200	160	125	100	18	2	4-Φ18	170	350	15
65	220	180	145	120	19	2	4-Φ18	195	350	19
80	250	195	160	135	20	2	8-Φ18	215	400	27
100	280	215	180	155	21	2	8-Φ18	250	500	38
125	320	245	210	185	22	3	8-Φ18	265	600	58
150	360	280	240	210	24	3	8-Φ23	270	800	81
200	400	335	295	265	26	3	12-Φ23	330	800	95
250	533	405	355	320	28	3	12-Φ25	450	1300	140

国标法兰球阀
GB Flange ball valve

JB/T 79.2-1994 JB/T 79.1-1994

PN25 国标法兰球阀

单位Unit:mm

公称通径 DN	主要外形和连接尺寸Main external and connecting dimensions										WT (kg)
	L	D	D1	D2	b	Y	f2	Z-Φd	H	W	
15	130	95	65	45	16	-	-	4-Φ14	103	100	3
20	140	105	75	55	16	-	-	4-Φ14	112	160	4
25	150	115	85	65	16	-	-	4-Φ14	123	160	6
32	165	135	100	78	18	-	-	4-Φ18	150	250	10
40	180	145	110	85	18	-	-	4-Φ18	156	250	14
50	200	160	125	100	20	-	-	4-Φ18	172	350	20
65	220	180	145	120	22	-	-	8-Φ18	197	350	25
80	250	195	160	135	22	-	-	8-Φ18	222	450	30
100	280	230	190	160	24	-	-	8-Φ23	253	450	40
125	320	270	220	188	28	-	-	8-Φ25	275	600	65
150	360	300	250	218	30	-	-	8-Φ25	286	800	85
200	400	360	310	278	34	-	-	12-Φ25	340	1200	100
250	533	425	370	332	36	-	-	12-Φ30	470	1400	165

PN40 国标法兰球阀

15	130	95	65	45	16	40	4	4-Φ14	103	100	3
20	140	105	75	55	16	51	4	4-Φ14	112	160	4
25	150	115	85	65	16	58	4	4-Φ14	123	160	6
32	180	135	100	78	18	66	4	4-Φ18	150	250	10
40	200	145	110	85	18	76	4	4-Φ18	156	250	14
50	220	160	125	100	20	88	4	4-Φ18	172	350	20
65	250	180	145	120	22	110	4	8-Φ18	197	350	25
80	280	195	160	135	22	121	4	8-Φ18	222	450	30
100	320	230	190	160	24	150	4.5	8-Φ23	253	450	40
125	400	270	220	188	28	176	4.5	8-Φ25	275	600	65
150	400	300	250	218	30	204	4.5	8-Φ25	286	800	85
200	550	375	320	282	38	260	4.5	12-Φ30	340	1200	100
250	568	445	385	345	42	313	4.5	12-Φ34	470	1400	165

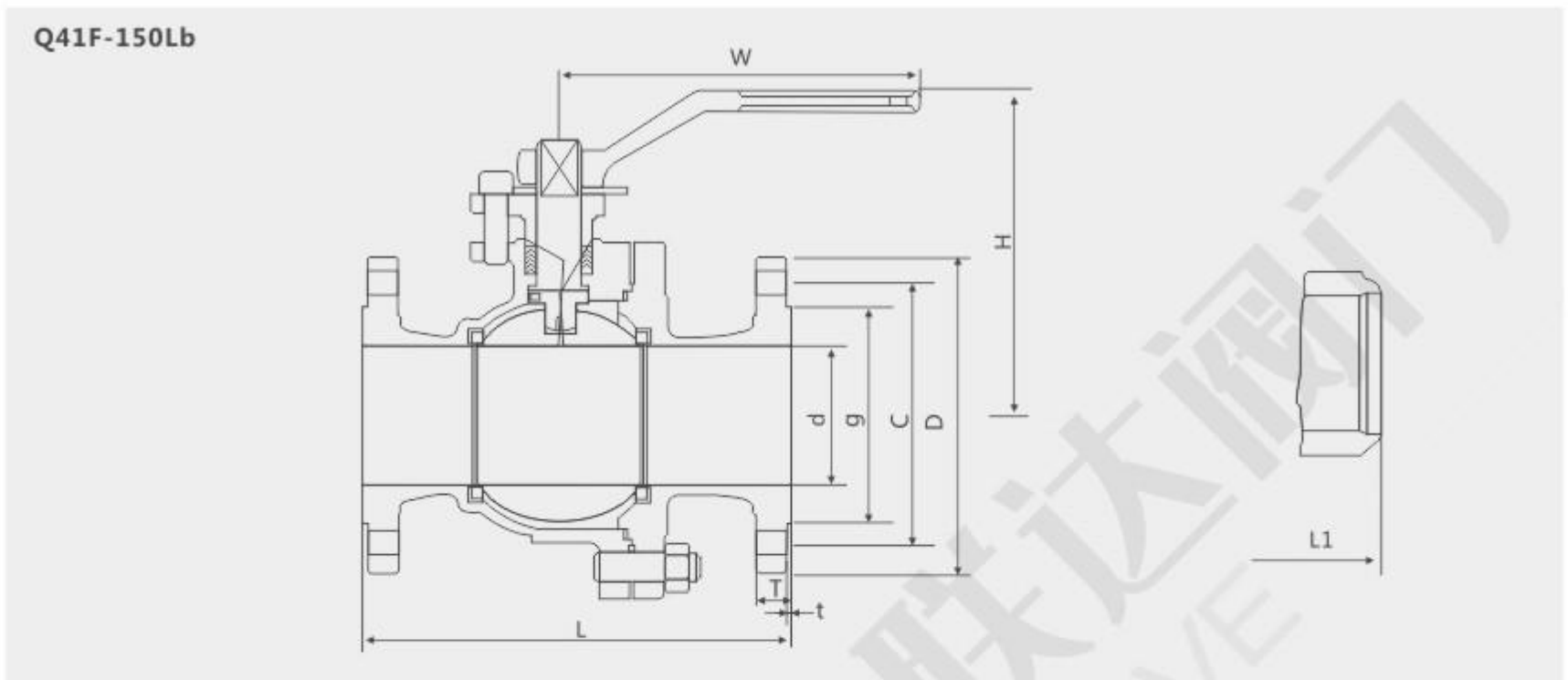
PN63 国标法兰球阀

15	140	105	75	55	18	40	4	4-Φ14	105	130	3.1
20	155	125	90	68	20	51	4	4-Φ18	125	130	4.9
25	180	135	100	78	22	58	4	4-Φ18	135	160	7.2
32	200	150	110	82	24	66	4	4-Φ23	150	160	8.7
40	220	165	125	95	24	76	4	4-Φ23	165	230	12.1
50	250	175	135	105	26	88	4	4-Φ23	175	230	16.7
65	280	200	160	130	28	110	4	8-Φ23	200	400	28.2
80	320	210	170	140	30	121	4	8-Φ23	210	400	36
100	350	250	200	168	32	150	4.5	8-Φ25	250	700	66
125	455	295	240	202	36	176	4.5	8-Φ30	295	1100	98
150	495	340	280	240	38	204	4.5	8-Φ34	340	1500	142

美标法兰球阀
ANSI Flange ball valve

A

球阀系列
Ball valve series



应用标准

球阀符合API 608/API 6D标准
球阀符合ISO 10434/ISO 14313标准
防火标志采用API 607 标准
防静电采用API 608标准
符合ASME B 16.34标准
结构长度符合ASME B 16.10标准
法兰尺寸符合ASME B 16.5标准
对接焊符合ASME B 16.25标准
试验与检验符合API 598/API 6D标准

Applicable standards

BALL VALVES, API 608/API 6D
BALL VALVES, ISO 10434/ISO 14313
FIRE DURABLE, API 607
ANTI STATIC, API 608
VALVES, ASME B 16.34
FACE TO FACE, ASME B 16.10
END FLANGES, ASME B 16.5
BUTTWELDING ENDS, ASM B 16.25
INSPECTION AND TEST, API 598/API 6D

设计描述

全通径设计
螺栓连接
浮动结构
防脱阀杆
防火设计
静电装置
切断装置
ISO5211 固定盘
法兰/焊接端
蜗轮操作

Design description:

FULL PORT DESIGN
BB, BOLTED BONNET, SPLIT BODY
FLOATING BALL TYPE
BLOW-OUT PROOF STEM
FIRE DURABLE CONSTRUCTION
ANTI STATIC DEVICE
STOPPER DEVICE
ISO5211 MOUNTING PAD
FLANGED OR BUTT WELDING ENDS
AVAILABLE WITH BG OPERATOR

各部件材质Materials of parts

序号 NO	零件名称 Part Name	ASTM材质 ASTM Material		
		碳钢Carbon Steel	CF8M	CF8
1	阀体Body	A216-WCB	A351-CF8M	CF8
2	阀盖Bonnet	A216-WCB	A351-CF8M	CF8
3	球Ball	A182-F304 ¹⁾	A182-F316	F304
4	阀杆Stem	A276-304	A276-316	F304
5	阀座Seat seat		R.PTFE	
6	垫片Gasket	石墨+304 ²⁾ Graphite+304 ²⁾	PTFE	PTFE
7	阀盖螺栓Valve cover bolt	A193-B7	A193-B8M	A193-B8M
8	阀盖螺母Valve cover nut	A194-2H	A194-8M	A194-8M
9	填料Packing		PTFE	PTFE
10	填料压板Packing press plate	A216-WCB	CF8	CF8
11	填料螺栓Packing bolt	A193-B7	A193-B8M	A193-B8M
12	定位片Positioning sheet	碳钢Carbon Steel	F304	F304
13	手柄Handle		碳钢Carbon Steel	

注释：1、A105+ENP 可选择的 Note:1).A105+ENP optional 2、缠绕石墨垫片 2).Spiral wound construction.

美标法兰球阀
ANSI Flange ball valve

Class 150LB 美标法兰球阀

单位Unit:mm

Size	Dimensions(mm)									
DN	d	L	D	C	g	T	t	H	W	n-Φ
1/2"	15	108	89	60.5	35	12.7	1.6	87.5	142	4-15
3/4"	20	117	98	70.0	43	12.7	1.6	87.5	142	4-15
1"	25	127	108	79.5	51	13	1.6	91.5	142	4-15
1 1/4"	32	140	117	89	64	14.5	1.6	107	190	4-15
1 1/2"	40	165	127	98.5	73	15	1.6	128	200	4-15
2"	50	178	152	120.5	92	16	1.6	136	200	4-19
2 1/2"	65	190	178	139.5	105	18	1.6	158	300	4-19
3"	80	203	190	152.5	127	19	1.6	196	350	4-19
4"	100	229	229	190.5	157	24	1.6	212	700	4-19
5"	125	256	254	215.9	186	24	1.6	252	1100	8-22
6"	150	394	279	241.5	261	26	1.6	272	1100	8-22
8"	200	457	343	298.5	270	29	1.6	342	1500	8-22
10"	250	533	406	362	324	30	1.6	345	1500	12-25
12"	305	610	483	432	381	32	1.6	385		12-25
14"	337	686	535	476	413	35	1.6	430		12-29
16"	387	762	597	540	470	37	1.6	470		16-29
18"	489	914	698	635	582	43	1.6	590		20-32

Class 300LB 美标法兰球阀

1/2"	15	140	95	66.5	35	15	1.6	87.5	142	4-15
3/4"	20	152	117	82.5	43	16	1.6	87.5	142	4-15
1"	25	165	124	89.0	51	18	1.6	91.5	142	4-19
1 1/4"	32	178	133	98.5	64	19	1.6	107	190	4-19
1 1/2"	40	190	156	114.5	73	21	1.6	128	200	4-22
2"	50	216	165	127	92	23	1.6	136	200	8-19
2 1/2"	65	241	190	149	105	26	1.6	158	300	8-22
3"	80	283	210	168.5	127	29	1.6	202	350	8-22
4"	100	305	254	200	157	32	1.6	218	700	8-22
5"	125	381	279	235	186	35	1.6	252	1100	8-22
6"	150	403	318	270	216	37	1.6	272	1100	12-22
8"	200	502	381	330	270	41	1.6	342	1500	12-25
10"	250	568	444	387.5	324	48	1.6	345	1500	16-29

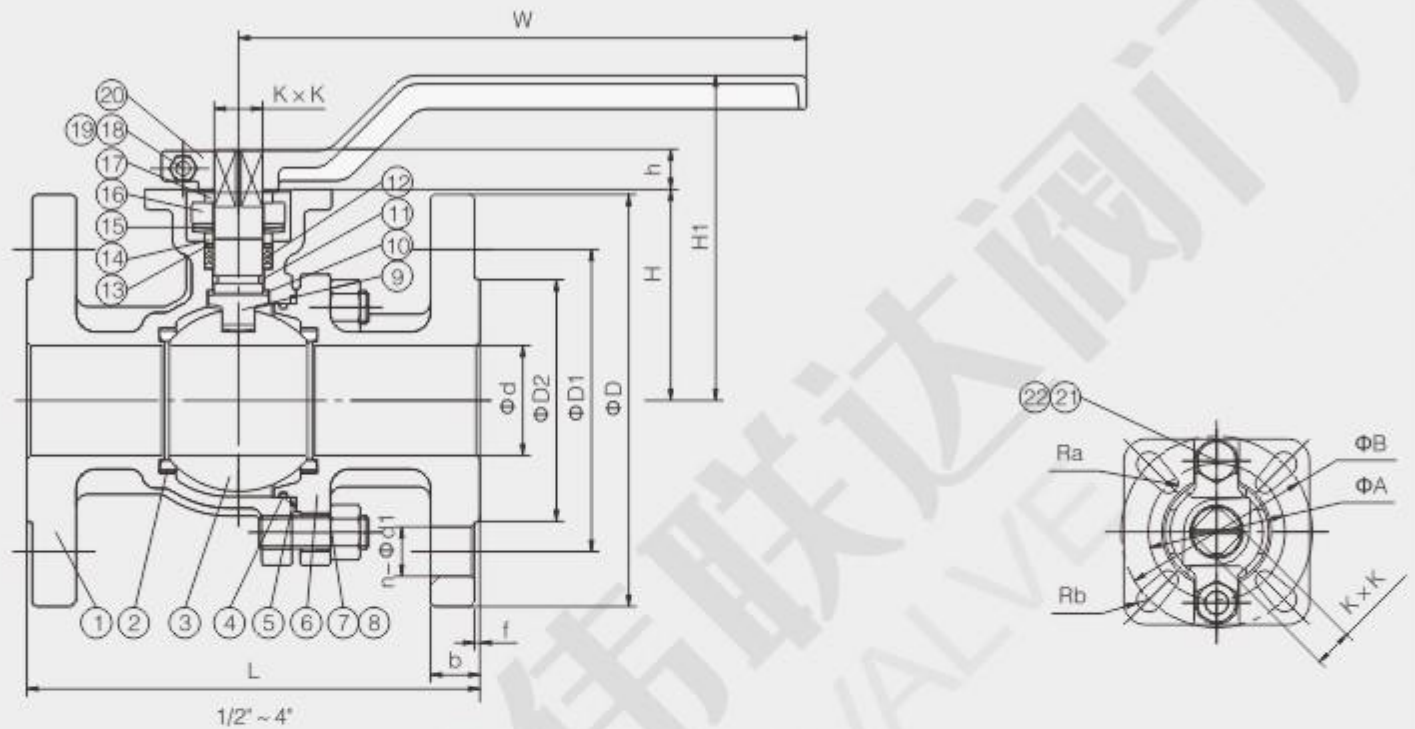
Class 600LB 美标法兰球阀

1/2"	15	165	95	66.5	35	15	6.4	59	160	4-16
3/4"	20	190	117	82.5	43	16	6.4	63	160	4-19
1"	25	216	124	89.0	51	18	6.4	75	230	4-19
1 1/4"	32	229	133	98.5	64	21	6.4	85	300	4-19
1 1/2"	40	241	156	114.5	73	22.3	6.4	95	400	4-22
2"	50	292	165	127	92	25.4	6.4	107	700	8-19
4"	100	432	273	216	157.2	38	6.4	178	1100	8-25
5"	125	491	330	267	186	44.5	6.4	225	1100	8-29
6"	152	559	356	282	216	47.2	6.4	250	1500	12-29
8"	203	660	419	349	282	55.7	6.4	294	1500	12-32

国标高平台法兰球阀
GB High platform flange ball valve

A

球阀系列
Ball valve series



特征 Features

全通径 Full port, 1/2'~12' (DN15~DN300)
工作压力 W.P.: PN16/40
工作温度 W.T.: -20°C~180°C
精密铸造 Investment casting
防静电装置 (可选) Anti-static device (option)
带锁手柄 Locking device handle
ISO5211直装高平台设计 ISO 5211 Direct mounting pad
API 607 防火结构 (可选) API 607 Fire safe (option)
自动化装置 (可选) Automation accessories (option)

JB PN16
设计标准 Design: GB / T 12237
法兰标准 Flange dimension: JB / T 79.1
结构长度 Face to face: JB / T 1686
检验 & 测试 Inspection & testing: GB / T 13927

HG PN16/40
设计标准 Design: GB / T 12237
法兰标准 Flange dimension: HG / T 20592
结构长度 Face to face: GB / T 12221
检验 & 测试 Inspection & testing: GB / T 13927

材料列表 Material List

序号 No.	零件名称 PARTS	材质 MATERIAL		
1	阀体 BODY	WCB	CF8	CF8M
2	阀座 SEAT	PTFE		
3	球体 BALL	CF8	CF8	CF8M
4	O 形圈 O-RING	FPM		
5	垫片 GASKET	PTFE		
6	阀盖 BONNET	WCB	CF8	CF8M
7	螺柱 BOLT	304		
8	螺母 NUT	304		
9	阀杆 STEM	304	304	316
10	阀杆垫圈 STEM WASHER	PTFE+25% GF		
11	O 形圈 O-RING	FPM		
12	填料 PACKING	PTFE		
13	耐磨垫 WEAR WASHER	PTFE+25% GF		
14	压圈 GLAND	304		
15	蝶形弹簧 DISC SPRING	304		
16	压板 GLAND FLANGE	CF8		
17	定位片 STOPPER	304		
18	内六角螺钉 HEX SOCKET BOLT	304		
19	螺母 NUT	304		
20	手柄 HANDLE	WCB/CF8		
21	螺栓 BOLT	304		
22	螺母 NUT	304		

A

国标高平台法兰球阀

GB High platform flange ball valve

球阀系列
Ball valve series

PN16 G22 机械部JB 国标高平台法兰球阀

单位 Unit: mm

尺寸 Nominal Diameter	L	d	D2	D1	D	b	f	n-Φd1	H	h	H1	W	Ra	Rb	A	B	K×K	
15	1/2"	130	15	45	65	95	14	2	4-14	51	9	83	140	3.0	3.5	36	50	9X9
20	3/4"	140	20	55	75	105	14	2	4-14	56	9	88	140	3.0	3.5	36	50	9X9
25	1"	*150/140	25	65	85	115	14	2	4-14	62	11	97	170	3.0	3.5	42	50	11X11
32	1-1/4"	165	32	78	100	135	16	2	4-18	72	11	107	170	3.0	3.5	42	50	11X11
40	1-1/2"	180	40	85	110	145	16	3	4-18	78	14	116	200	3.5	4.5	50	70	14X14
50	2"	200	50	100	125	160	16	3	4-18	86	14	124	200	3.5	4.5	50	70	14X14
65	2-1/2"	220	65	120	145	180	18	3	4-18	102	17	146	300	4.5	5.5	70	102	17X17
80	3"	250	80	135	160	195	20	3	8-18	115	17	159	300	4.5	5.5	70	102	17X17
100	4"	280	100	155	180	215	20	3	8-18	137	17	181	300	4.5	5.5	70	102	17X17
125	5"	320	125	185	210	250	22	3	8-18	170	25	255	650	5.5	6.5	102	125	22X22
150	6"	360	150	210	240	280	24	3	8-23	192	30	277	800	5.5	6.5	102	125	27X27
200	8"	400	200	265	295	335	26	3	12-23	234	35	280	300	5.5	6.5	102	125	27X27

PN16 G2S 化工部短系列HG 国标高平台法兰球阀

单位 Unit: mm

尺寸 Nominal Diameter	L	d	D2	D1	D	b	f	n-Φd1	H	h	H1	W	Ra	Rb	A	B	K×K	
15	1/2"	108	15	45	65	95	16	2	4-14	55	9	87	140	3.0	3.5	36	50	9X9
20	3/4"	117	20	58	75	105	18	2	4-14	60	9	92	140	3.0	3.5	36	50	9X9
25	1"	127	25	68	85	115	18	2	4-14	67	11	102	170	3.0	3.5	42	50	11X11
32	1-1/4"	140	32	78	100	140	18	2	4-18	76	11	111	170	3.0	3.5	42	50	11X11
40	1-1/2"	165	40	88	110	150	18	2	4-18	85	14	123	200	3.5	4.5	50	70	14X14
50	2"	178	50	102	125	165	18	2	4-18	93	14	131	200	3.5	4.5	50	70	14X14
65	2-1/2"	190	65	122	145	185	18	2	8-18	113	17	157	300	4.5	5.5	70	102	17X17
80	3"	203	80	138	160	200	20	2	8-18	126	17	170	300	4.5	5.5	70	102	17X17
100	4"	229	100	158	180	220	20	2	8-18	141	17	185	300	4.5	5.5	70	102	17X17
125	5"	356	125	188	210	250	22	2	8-22	170	25	255	650	5.5	6.5	102	125	22X22
150	6"	394	150	212	240	285	22	2	8-22	192	30	277	800	5.5	6.5	102	125	27X27
200	8"	457	200	268	295	340	24	2	8-22	234	35	280	300	5.5	6.5	102	125	27X27

PN16 G21 化工部长系列HG 国标高平台法兰球阀

单位 Unit: mm

尺寸 Nominal Diameter	L	d	D2	D1	D	b	f	n-Φd1	H	h	H1	W	Ra	Rb	A	B	K×K	
15	1/2"	130	15	45	65	95	16	2	4-14	55	9	87	140	3.0	3.5	36	50	9X9
20	3/4"	140	20	58	75	105	18	2	4-14	60	9	92	140	3.0	3.5	36	50	9X9
25	1"	*150/140	25	68	85	115	18	2	4-14	67	11	102	170	3.0	3.5	42	50	11X11
32	1-1/4"	165	32	78	100	140	18	2	4-18	76	11	111	170	3.0	3.5	42	50	11X11
40	1-1/2"	165	40	88	110	150	18	2	4-18	85	14	123	200	3.5	4.5	50	70	14X14
50	2"	203	50	102	125	165	18	2	4-18	93	14	131	200	3.5	4.5	50	70	14X14
65	2-1/2"	222	65	122	145	185	18	2	8-18	113	17	157	300	4.5	5.5	70	102	17X17
80	3"	241	80	138	160	200	20	2	8-18	126	17	170	300	4.5	5.5	70	102	17X17
100	4"	305	100	158	180	220	20	2	8-18	141	17	185	300	4.5	5.5	70	102	17X17
125	5"	320	125	188	210	250	22	2	8-22	170	25	255	650	5.5	6.5	102	125	22X22
150	6"	360	150	212	240	285	22	2	8-22	192	30	277	800	5.5	6.5	102	125	27X27
200	8"	400	200	268	295	340	24	2	12-22	234	35	280	300	5.5	6.5	102	125	27X27

国标固定式法兰球阀
GB Fixed flange ball valve

A

球阀系列
Ball valve series

执行标准Implementation of standards

- 1、设计和制造Design and manufacture : GB/T 12237 ; API 608
- 2、检验和试验Inspection and test : GB/T 13927 ; API 598
- 3、法兰连接Flange connection : JB/T 79.1~2 ; ASME/ANSI B 16.5
- 4、结构长度Structure length : GB/T 12221 ; ASME/ANSI B 16.10

性能规范Performance Specifications

试验压力 Test pressure 单位Unit : MPa

公称压力PN Max temperature Working pressure	常温最大 工作压力 Working pressure	壳体 试验压力 Case Test pressure	气密封 试验压力 Gas Seals test pressure	高压密封 试验压力 High-pressure sealing Test pressure
1.6	1.6	2.4	0.6	1.76
2.5	2.5	3.8	0.6	2.75
4.0	4.0	6.0	0.6	4.4
6.4	6.4	9.6	0.6	7.1
Class 150	2.0	3.0	0.6	2.2
Class 300	5.0	7.5	0.6	5.5

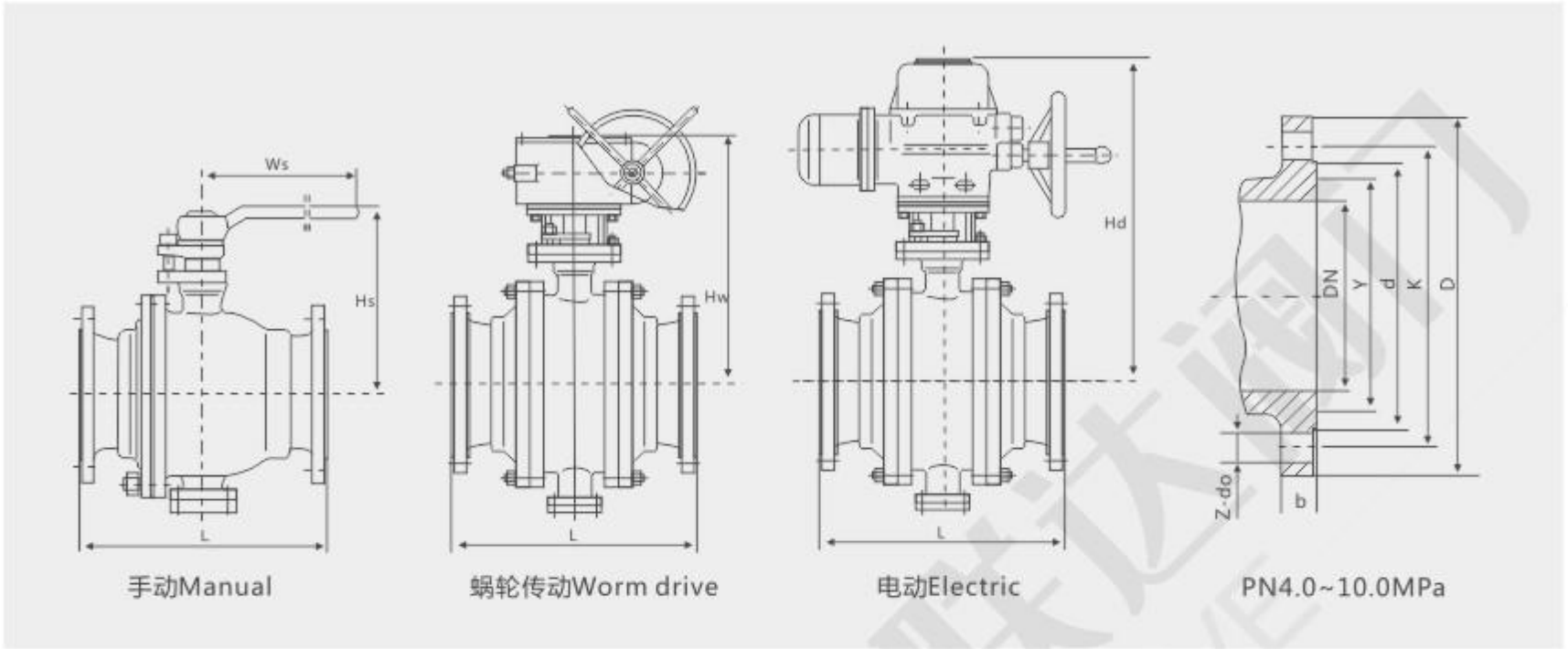
使用范围Terms of Use

壳体材料 Shell material	阀座材料 Seat material	活用温度 Applicable temperature	适用介质 Applicable media
碳钢C型 Carbon Steel C	聚四氟乙烯 PTFE	≤150°C	水、蒸汽、油品等 Water, steam, oil, etc.
	对位聚苯 Counterpoint polystyrene	≤250°C	
铬镍钛钢P型 Chrome P-type nickel-titanium steel	聚四氟乙烯 PTFE	≤150°C	硝酸类Nitric acid
	对位聚苯 Counterpoint polystyrene	≤200°C	
铬镍钼钛钢R型 Chrome-nickel steel R-Mo Ti	聚四氟乙烯 PTFE	≤150°C	醋酸类Acetic acid
	对位聚苯 Counterpoint polystyrene	≤200°C	

主要零件材料Main components material

阀体、阀盖 Body, bonnet	GB	WCB	ZG0Cr18Ni9	ZG0Cr17Ni12Mo2
	ASTM	WCB	CF8	CF8M
球体Ball body	GB	2Cr13	0Cr18Ni9	0Cr17Ni12Mo2
	ASTM	420	304	316
阀杆Stem	GB	2Cr13	0Cr18Ni9	1Cr18Ni12Mo2Ti
	ASTM	420	304	316
阀座Seat	GB	2Cr13/PTFE	0Cr18Ni9/PTFE	0Cr17Ni12Mo2/PTFE
	ASTM	420/PTFE	304/PTFE	316/PTFE
填料Packing	GB	PTFE	PTFE	PTFE
	ASTM	PTFE	PTFE	PTFE
螺栓Bolt	GB	35	0Cr18Ni9	0Cr18N89
	ASTM	A193 B7	A320-B8	A320-B8
螺母Nut	GB	45	0Cr18Ni9	0Cr18Ni9
	ASTM	A194 2H	A190-8	A194-8

国标固定式法兰球阀
GB Fixed flange ball valve



PN16 国标固定式法兰球阀

JB/T79

公称通径 DN	尺寸Size (mm)										
	L	D	K	d	Y	b	Z-do	Ws	Hs	Hw	Hd
150	394	280	240	210	-	22	8-23	1000	305	470	540
200	457	335	295	265	-	24	12-23	-	-	520	580
250	533	405	355	320	-	26	12-25	-	-	610	640
300	610	460	410	375	-	28	12-25	-	-	650	690
350	686	520	470	435	-	32	16-25	-	-	740	785
400	762	580	525	485	-	36	16-30	-	-	795	830
450	864	640	585	545	-	38	20-30	-	-	860	910
500	914	705	650	608	-	42	20-34	-	-	945	990
600	1067	840	770	718	-	46	20-41	-	-	1040	1090
700	1245	910	840	788	-	48	24-41	-	-	1150	1210
800	1372	1020	950	898	-	50	24-41	-	-	1280	1340
900	1524	1120	1050	998	-	52	28-41	-	-	1430	1510
1000	1753	1255	1170	1110	-	54	28-48	-	-	1580	1640
1200	2032	1485	1390	1325	-	56	32-54	-	-	1810	1910
1400	2300	1685	1590	1525	-	60	36-54	-	-	2010	2115

PN25 国标固定式法兰球阀

JB/T79

150	403	300	250	218	-	30	8-25	1000	305	470	555
200	502	360	310	278	-	34	12-25	-	-	540	595
250	568	425	370	332	-	36	12-30	-	-	630	655
300	648	485	430	390	-	40	16-30	-	-	650	705
350	762	550	490	448	-	44	16-34	-	-	740	795
400	838	610	550	505	-	48	16-34	-	-	795	830
450	914	660	600	555	-	50	20-34	-	-	860	910
500	991	730	660	610	-	52	20-41	-	-	945	990
600	1143	840	770	718	-	56	20-41	-	-	1040	1090
700	1346	955	875	815	-	60	24-48	-	-	1150	1210
800	1524	1070	990	930	-	64	24-48	-	-	1305	1340
900	1727	1180	1090	1025	-	66	28-54	-	-	1505	1600
1000	1880	1305	1210	1140	-	68	28-58	-	-	1615	1705
1200	2184	1525	1420	1350	-	72	32-58	-	-	1925	2035
1400	2300	1750	1640	1560	-	78	36-65	-	-	2110	2185

国标固定式法兰球阀
GB Fixed flange ball valve

A

球阀系列
Ball valve series

PN40 国标固定式法兰球阀

JB/T79

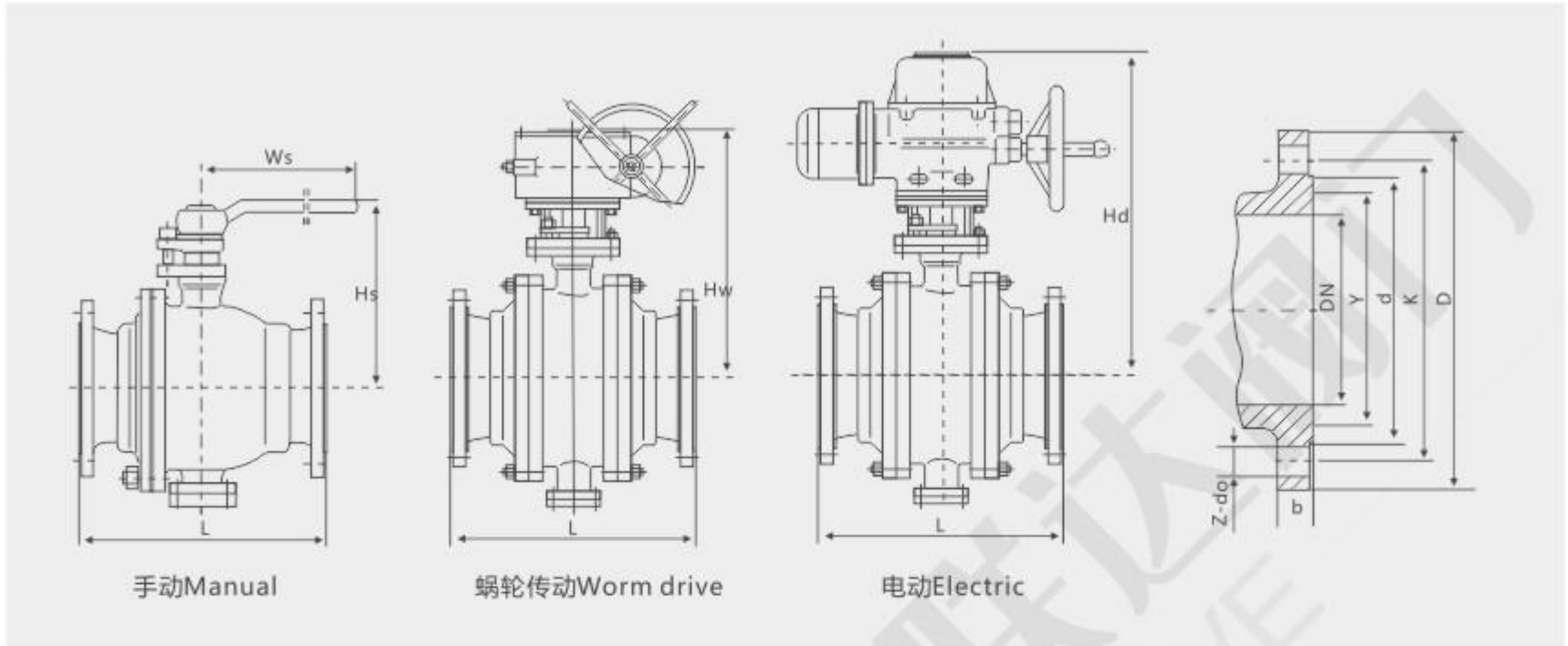
公称通径 DN(mm)	尺寸Size (mm)										
	L	D	K	d	Y	b	Z-do	Ws	Hs	Hw	Hd
150	403	300	250	218	204	30	8-25	1200	360	485	590
200	502	375	320	282	260	38	12-30	-	-	580	640
250	568	445	385	345	313	42	12-34	-	-	665	680
300	648	510	450	408	364	46	16-34	-	-	760	810
350	762	570	510	465	422	52	16-34	-	-	820	890
400	838	655	585	535	474	58	16-41	-	-	860	940
450	914	680	610	560	524	60	20-41	-	-	930	1010
500	991	755	670	612	576	62	20-48	-	-	980	1130
600	1143	890	795	730	678	62	20-54	-	-	1040	1090
700	1346	995	900	835	768	68	24-54	-	-	1150	1210
800	1524	1135	1030	960	876	76	24-58	-	-	1305	1340
900	1727	1270	1168	1022	-	105	32-54	-	-	1505	1600
1000	1880	1238	1156	1086	-	114	32-44	-	-	1615	1705
1200	2184	1467	1372	1302	-	133	32-51	-	-	1925	2035
1400		1708	1600	1518	-	154	28-60	-	-	2110	2185

PN64 国标固定式法兰球阀

JB/T79

公称通径 DN(mm)	尺寸Size (mm)										
	L	D	K	d	Y	b	Z-do	Ws	Hs	Hw	Hd
150	495	340	280	240	204	38	8-34	1200	360	485	590
200	597	405	345	300	260	44	12-34	-	-	580	650
250	673	470	400	352	313	48	12-41	-	-	665	720
300	762	530	460	412	364	54	16-41	-	-	760	840
350	826	595	525	475	422	60	16-41	-	-	820	930
400	902	670	585	525	474	66	16-48	-	-	870	990
500	1054	800	705	640	576	70	20-54	-	-	995	1150
600	1232	930	820	750	678	76	20-58	-	-	1100	1180
700	1397	1035	940	800	-	95	28-51	-	-	1180	1230
800	1651	1149	1054	914	-	108	28-54	-	-	1345	1385
900	1880	1270	1168	1022	-	114	32-54	-	-	1550	1655
1000	1981	1270	1175	1092	-	133	32-51	-	-	1675	1745
1200	2311	1511	1403	1308	-	152	28-60	-	-	1945	2075

美标固定金属密封球阀
Ansi fixed metal sealing ball valve



Class 150lb 美标固定金属密封球阀

单位Unit:mm

公称通径 DN(mm)	尺寸Size (mm)										
	L	D	K	d	Y	b	z-d0	Ws	Hs	Hw	Hd
2"	178	152	120.7	92	-	14.3	4-19	260	155	-	-
2 1/2"	190	178	139.7	105	-	15.9	4-19	350	185	-	-
3"	203	190	152.4	127	-	17.5	4-19	500	205	-	-
4"	229	229	190.5	157	-	22.3	8-19	650	255	390	500
5"	356	254	215.9	186	-	22.3	8-22.5	800	285	410	520
6"	394	279	241.3	216	-	23.9	8-22.5	1000	305	470	540
8"	457	343	298.5	270	-	27.0	8-22.5	-	-	520	580
10"	533	406	362	324	-	28.6	12-25.5	-	-	610	640
12"	610	483	431.8	381	-	30.2	12-25.5	-	-	650	690
14"	686	533	476.3	413	-	33.4	12-28.5	-	-	740	785
16"	762	597	539.8	470	-	35.0	16-28.5	-	-	795	830
18"	864	635	577.9	533	-	38.1	16-32	-	-	860	910
20"	914	699	635.0	584	-	41.3	20-32	-	-	945	990
24"	1067	813	749.3	692	-	46.1	20-35	-	-	1040	1090
28"	1245	927	864	800	-	71	28-35	-	-	1150	1210
32"	1372	1060	978	914	-	81	28-41	-	-	1280	1340

Class 300LB 美标固定金属密封球阀

2"	216	165	127	92	-	20.7	8-19	260	155	-	-
2 1/2"	241	190	149.2	105	-	23.9	8-22.5	350	185	-	-
3"	282	210	168.3	127	-	27.0	8-22.5	500	205	-	-
4"	305	254	200	157	-	30.2	8-22.5	800	270	410	530
5"	381	279	235	186	-	33.4	8-22.5	1000	305	470	560
6"	403	318	269.9	216	-	35.0	12-22.5	1200	340	485	590
8"	502	381	330.2	270	-	39.7	12-25.5	-	-	580	640
10"	568	445	387.4	324	-	46.1	16-28.5	-	-	665	680
12"	648	521	450.8	381	-	49.3	16-32	-	-	760	810
14"	762	584	514.4	413	-	52.4	20-32	-	-	820	890
16"	838	648	571.5	470	-	55.6	20-35	-	-	860	940
18"	914	711	628.5	533	-	58.8	24-35	-	-	930	1010
20"	991	775	685.8	584	-	62.0	24-35	-	-	980	1130

Class 600LB 美标固定金属密封球阀

2 1/2"		165	127	108	-	25.4	8-19	350	175	-	-
3"	330	190	149.2	127	-	28.6	8-22.5	500	200	-	-
4"	356	210	168.3	146	-	31.8	8-22.5	650	235	-	-
5"	432	273	215.9	175	-	38.1	8-25.5	1000	275	395	550
6"	508	330	266.7	210	-	44.5	8-28.5	1200	325	430	580
8"	559	356	292.1	241	-	47.7	12-28.5	-	-	495	620
10"	660	419	349.2	302	-	55.6	12-32	-	-	595	680
12"	787	508	431.8	356	-	63.5	16-35	-	-	680	740
14"	838	559	489.0	413	-	66.7	20-35	-	-	790	850

高压锻造球阀 High pressure forged ball valve

A

球阀系列
Ball valve series

用途 Use to

高压锻造球阀适用于class600~class1500, pn160~pn320的管路上, 用于截断或接通管路中的介质。高压锻造球阀的驱动方式一般为手动, 也可采用蜗轮蜗杆传动, 气动及电动。连接形式有承插焊连接、内螺纹连接、法兰连接、对夹连接及对焊连接。

High pressure forged ball valves are suitable for pipelines between class600~class1500 and pn160~pn320, used to cut off or connect the medium in the pipeline. The driving method of high-pressure forged ball valves is generally manual, and can also use worm gear transmission, pneumatic or electric. The connection forms include socket welding connection, internal thread connection, flange connection, clamp connection, and butt welding connection.

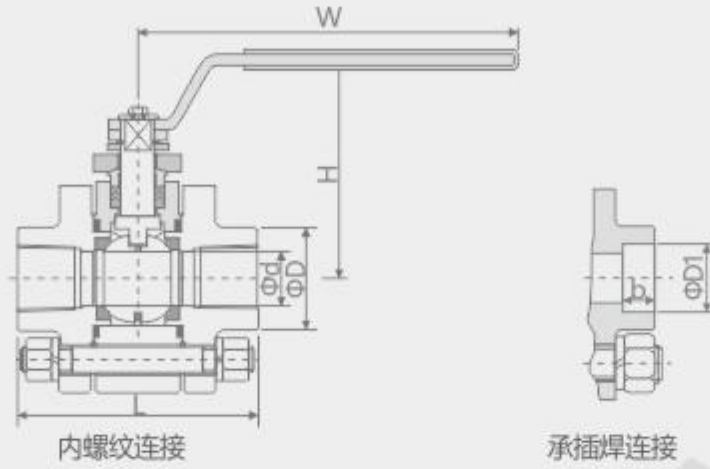
型号、材料及主要参数 Model, material, and main parameters

连接形式 Connection type	公称压力 Nominal pressure	常规产品型号 Conventional product models				
承插焊连接 Socket welding connection	Class600	Q6c1n-a6	Q6c1n-a6p8	Q6c1n-a6p3	Q6c1n-a6r8	Q6c1n-a6r3
	Class800	Q6c1n-a8	Q6c1n-a8p8	Q6c1n-a8p3	Q6c1n-a8r8	Q6c1n-a8
	Class900	Q6c1n-a9	Q6c1n-a9p8	Q6c1n-a9p3	Q6c1n-a9r8	Q6c1n-a9
	Class1500	Q6c1n-a15	Q6c1n-a15p8	Q6c1n-a15p3	Q6c1n-a15r8	Q6c1n-a15
内螺纹连接 Female connection	Class600	Q11n-a6	Q11n-a6p8	Q11n-a6p3	Q11n-a6r8	Q11n-a6
	Class800	Q11n-a8	Q11n-a8p8	Q11n-a8p3	Q11n-a8r8	Q11n-a8
	Class900	Q11n-a9	Q11n-a9p8	Q11n-a9p3	Q11n-a9r8	Q11n-a9
主要零件材料 Material for main parts	阀体、阀盖 Valve body, valve cover	A105	304	304I	316	316I
	阀杆、球体 Valve stem, ball	2cr13	304	304I	316	316I
	密封圈 Seal ring	尼龙、增强聚四氟乙烯、对位聚苯、peek Nylon, reinforced polytetrafluoroethylene, para polystyrene, peek				
适用工况 Applicable working conditions	适用介质 Applicable medium	水、蒸汽、油品、煤气、液化气、天然气等 Water, steam, oil products, gas, liquefied gas, natural gas, etc	硝酸类腐蚀性介质 Nitric acid corrosive Medium	强氧化性介质 Strong oxidizing Medium	醋酸类腐蚀性介质 Acetic acid corrosive Medium	尿素类腐蚀性介质 Urea type corrosive Medium
	适用温度 Applicable temperature	≤80°C (尼龙)、≤180°C (增强聚四氟乙烯)、≤300°C (对位聚苯)、≤250°C (peek) ≤80°C (nylon), ≤180°C (reinforced polytetrafluoroethylene), ≤300°C (para polystyrene), ≤250°C (peek)				

型号 Model	Q41N-160	Q41N-320	Q71N-160	Q71N-320	Q61N-160	Q61N-320
连接形式 Connection form	法兰连接 Flange connection	法兰连接 Flange connection	对夹连接 Clamp connection	对夹连接 Clamp connection	对焊连接 Butt welding connection	对焊连接 Butt welding connection
公称压力 Nominal pressure	PN160	PN320	PN160	PN320	PN160	PN320
主要零件材料 Main component materials	阀体: 碳钢; 阀座、球体、阀杆: 2Cr13; 密封圈: 尼龙; 螺栓: 35crmo Valve body: carbon steel; Valve seat, ball, and valve stem: 2Cr13; Sealing ring: nylon; Bolt: 35crmo					
适用工况 Applicable working conditions	适用介质 Applicable medium	水、油品、氮、氢、氨等介质 Water, oil, nitrogen, hydrogen, ammonia and other media				
	适用温度 Applicable temperature	≤80°C				

高压锻造球阀

High pressure forged ball valve



Class600/Class800 内螺纹连接及承插焊连接锻造球阀

公称尺寸DN		尺寸 (mm)								
		L		d	D	H	W	NPT	D1	b
		内螺纹 Internal thread	承插焊 Socket weld							
15	1/2	100	110	13	32	88	150	1/2	22	10
20	3/4	100	120	19	38	92	150	3/4	27.3	13
25	1	120	130	25	48	106	180	1	34	13
32	1¼	140	160	32	58	124	200	1¼	42.6	13
40	1½	150	180	38	66	125	250	1½	48.9	13
50	2	190	200	51	86	162	350	2	61.4	16

Class900/Class1500 内螺纹连接及承插焊连接锻造球阀

单位Unit:mm

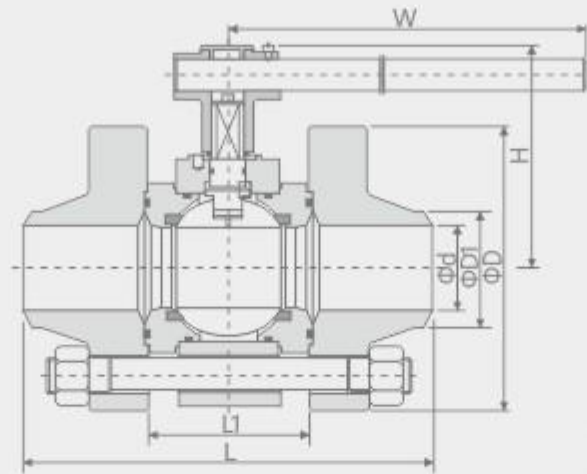
公称尺寸DN		尺寸 (mm)								
		L		d	D	H	W	NPT	D1	b
		内螺纹 Internal thread	承插焊 Socket weld							
15	1/2	100	110	14	35	90	180	1/2	21.9	12
20	3/4	100	120	19	42	95	200	3/4	27.3	13
25	1	120	130	23	50	106	220	1	34	13
32	1¼	140	160	32	58	116	250	1¼	42.8	13
40	1½	150	180	38	72	150	300	1½	48.9	13
50	2	190	200	51	86	150	350	2	61.4	16

高压锻造球阀
High pressure forged ball valve

A

球阀系列
Ball valve series

Q61N对焊连接高压锻造球阀



PN160 高压锻造球阀

单位Unit:mm

公称尺寸DN	尺寸 (mm)							重量 (kg)
	L	L1	d	D	D1	H	W	
10	150	60	10	90	18	58	200	4
15	170	70	14	100	23	62	200	5
20	190	81	19	110	29	75	250	7
25	205	95	25	115	36	80	250	8
32	230	110	32	150	43	96	300	16
40	260	120	38	170	49	111	400	22
50	330	140	50	200	61	128	400	35
65	360	150	64	225	80	180	500	48
80	375	160	76	268	105	200	600	67
100	440	186	100	320	118	245	800	116

PN320 高压锻造球阀

10	150	60	10	90	18	58	200	5
15	170	70	14	100	23	62	200	6
20	190	81	19	110	29	75	250	7
25	205	95	25	115	36	80	250	9
32	230	110	32	150	43	96	300	18
40	260	120	38	170	49	111	400	24
50	330	140	50	200	61	128	400	38
65	345	150	64	225	80	180	500	52
80	375	160	76	268	105	200	600	72
100	440	186	100	320	118	245	800	124

锻钢球阀

Forged steel ball valve

结构特点及用途

- 1、抗硫化应力裂化：阀门接触介质的材料都是按美国腐蚀工程师协会 NACE0 1-75 的标准进行选择，且按标准进行表面镀镍，能满足硫化环境工况的要求。
- 2、用聚合物或金属作密封材料，在高温、高压工况具有优良的密封性能。
- 3、设置填料箱，防止阀门内腔压力异常升高而使阀杆飞出，增置倒密封结构，能确保填料可靠密封。
- 4、广泛适用于化工、炼油、油气、天然气、钢铁等介质管路。

Unique feature and use

- 1、Anti-curing stress cracking: The valve contact medium's material is corrodes Engineer according to the US the association NACE0 1-75 standards to carry on the choice, and carries on the superficial nickel plating according to the standard, can satisfy the curing environment operating mode the request.
- 2、Make the packing material with the polymer or the metal, in the high temperature, the high-pressured operating mode has the fine sealing property.
- 3、The establishment stuffing box, prevents the valve cavity pressure anolmaly to elevate causes the valve lever to depart, increasess ets seals the structure but actually, can guarantee that the padding seals reliably.
- 4、Widely is suitable for medium pipelines and so on chemical industry, refinery, oil gas, natural gas, steel and iron.

性能规范 Performance Specifications

试验压力 Test pressure

单位 Unit : MPa

使用范围 Terms of use

公称压力 PN	常温最大工作压力 Maximum temperature working pressure	壳体试验压力 Case test pressure	气密封试验压力 Gas Seals test pressure	高压密封试验压力 High pressure sealing test pressure	壳体材料 Shell material	阀座材料 Seat Material	适用温度 Applicable medium	适用介质 Applicable temperature	
1.6	1.6	2.4	0.6	1.76	碳钢C型 Carbon Steel C	PTFE PTFE	≤150°C	水、蒸汽、油品等 Water, steam, oil, etc.	
2.5	2.5	3.8	0.6	2.75		不锈钢 Stainless steel	≤425°C		
4.0	4.0	6.0	0.6	4.4		铬镍钛钢P型 Chromium P type nickel-titanium steel	PTFE PTFE	≤150°C	硝酸类 Nitric acid
6.4	6.4	9.6	0.6	7.1			不锈钢 Stainless steel	≤200°C	
10.0	10.0	15.0	0.6	11.0	铬镍钼钛钢R型 Chromium nickel steel R Mo Ti	PTFE PTFE	≤150°C	醋酸类 Acetic acid	
16.0	16.0	24.0	0.6	17.6		不锈钢 Stainless steel	≤200°C		
20.0	20.0	30.0	0.6	22.0	铬钼钒钢I型 Cr-Mo steel I-V	PTFE PTFE	≤150°C	蒸汽、冶炼、能源等 Steam, metallurgical, energy, etc.	
25.0	25.0	37.5	0.6	27.5		不锈钢 Stainless steel	≤200°C		
Class 150	2.0	3.0	0.6	2.2					
Class 300	5.0	7.5	0.6	5.5					
Class 600	10.0	15.0	0.6	11.0					
Class 900	15.0	22.5	0.6	16.5					
Class 1500	25.0	37.5	0.6	27.5					

主要零件材料 Main components material

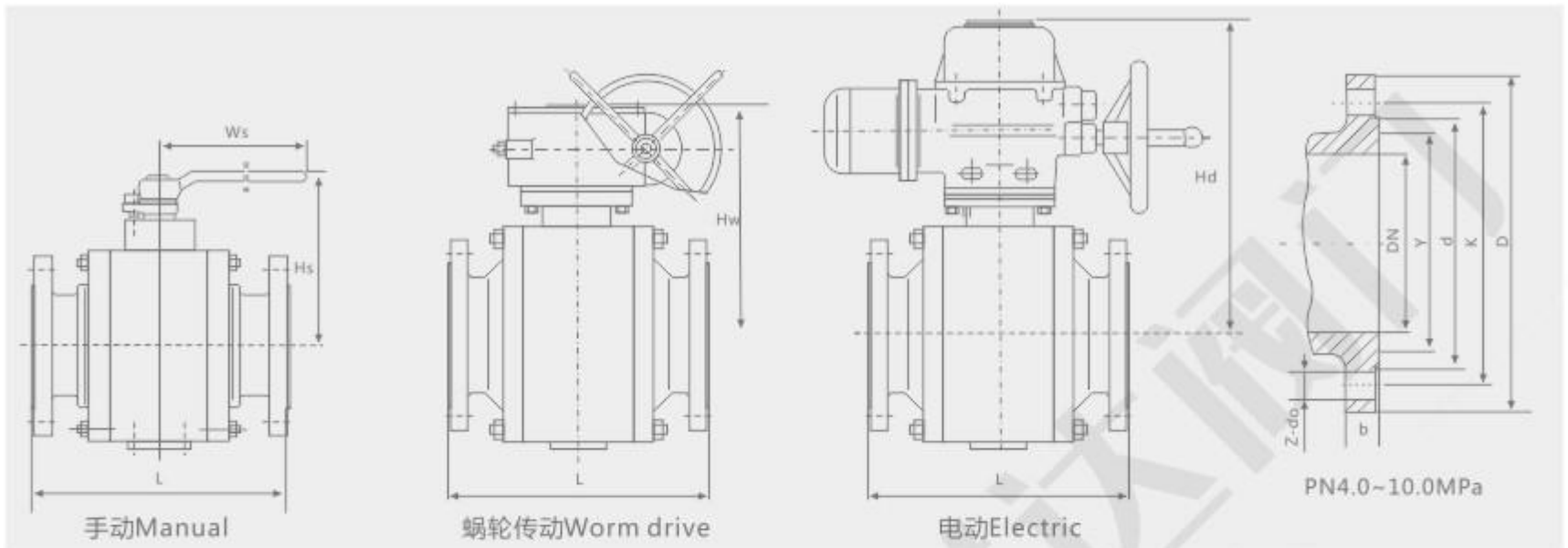
阀体、阀盖、填料箱 Body, bonnet Packing Box	GB	25	1Cr18Ni9Ti		0Cr18Ni12Mo2Ti		15Cr1Mo1V	
	ASTM	1025	304		316		F22a	
球体 Ball	GB	2Cr13/表面特殊处理 Special surface treatment	1Cr18Ni9Ti/表面特殊处理 Special surface treatment		0Cr18Ni12Mo2Ti/表面特殊处理 Special surface treatment		25Cr2Mo1V/表面特殊处理 Special surface treatment	
	ASTM	420	304+HF		316+HF		F22a+HF	
阀杆、固定轴 Stem, fixed axis	GB	2Cr13	0Cr18Ni9		0Cr17Ni12Mo2		25Cr2Mo1V	
	ASTM	420	304		316		F22a	
阀座 Seat	GB	PTFE	2Cr13	PTFE	0Cr18Ni9	PTFE	0Cr17Ni12Mo2	25Cr2Mo1V
	ASTM	PTFE	420	PTFE	304	PTFE	316	F22a
填料 Packing	GB	PTFE	柔性石墨 Flexible Graphite	PTFE	柔性石墨 Flexible Graphite	PTFE	柔性石墨 Flexible Graphite	柔性石墨 Flexible Graphite
	ASTM	PTFE	柔性石墨 Flexible Graphite	PTFE	柔性石墨 Flexible Graphite	PTFE	柔性石墨 Flexible Graphite	柔性石墨 Flexible Graphite
螺栓 Bolt	GB	35	0Cr18Ni9		0Cr18Ni9		15Cr1Mo1V	
	ASTM	A193 B7	A320-B8		A320-B8		A193 B16	
螺母 Nut	GB	45	1Cr13		1Cr13		20CrMo	
	ASTM	A194 2H	A194-8		A194-8		A194-4	

锻钢球阀

Forged steel ball valve

A

球阀系列
Ball valve series



PN1.6 锻钢球阀

JB/T79

公称通径 DN	尺寸Size(mm)										
	L	D	K	d	Y	b	Z-do	Ws	Hs	Hw	Hd
40	165	145	110	85	-	16	4-18	230	135	-	-
50	203	160	125	100	-	16	4-18	260	150	-	-
65	222	180	145	120	-	18	4-18	350	180	-	-
80	241	195	160	135	-	20	8-18	500	195	-	-
100	305	215	180	155	-	20	8-18	650	245	310	420
125	356	245	210	185	-	22	8-18	800	270	330	440
150	394	280	240	210	-	24	8-23	1000	295	390	470
200	457	335	295	265	-	26	12-23	-	-	440	510
250	533	405	355	320	-	30	12-25	-	-	490	560
300	610	460	410	375	-	30	12-25	-	-	530	600
350	686	520	470	435	-	34	16-25	-	-	620	670
400	762	580	525	485	-	36	16-30	-	-	675	720
450	864	640	585	545	-	40	20-30	-	-	740	790
500	914	705	650	608	-	44	20-34	-	-	825	870
600	1067	840	770	718	-	48	20-41	-	-	920	960

PN2.5 锻钢球阀

JB/T79

40	190	145	110	85	-	18	4-18	230	135	-	-
50	216	160	125	100	-	20	4-18	260	150	-	-
65	241	180	145	120	-	22	8-18	350	180	-	-
80	283	195	160	135	-	22	8-18	500	195	-	-
100	305	230	190	160	-	24	8-23	650	245	310	420
125	381	270	220	188	-	28	8-25	800	270	330	440
150	403	300	250	218	-	30	8-25	1000	295	390	470
200	502	360	310	278	-	34	12-25	-	-	440	510
250	568	425	370	332	-	36	12-30	-	-	490	560
300	648	485	430	390	-	40	16-30	-	-	530	600
350	762	550	490	448	-	44	16-034	-	-	620	670
400	838	610	550	505	-	48	16-34	-	-	675	720
450	914	660	600	555	-	50	20-34	-	-	740	790
500	991	730	660	610	-	52	20-41	-	-	825	870
600	1143	840	770	718	-	56	20-41	-	-	920	960

锻钢球阀

Forged steel ball valve

PN4.0 锻钢球阀

JB/T79

公称口径 DN	尺寸Size(mm)										
	L	D	K	d	Y	b	Z-do	Ws	Hs	Hw	Hd
40	190	145	110	85	76	18	4-18	230	135	-	-
50	216	160	125	100	88	20	4-18	260	150	-	-
65	241	180	145	120	110	22	8-18	350	180	-	-
80	283	195	160	135	121	22	8-18	500	195	-	-
100	305	230	190	160	150	24	8-23	800	250	320	430
125	381	270	220	188	176	28	8-25	1000	280	340	450
150	403	300	250	218	204	30	8-25	1200	300	405	480
200	502	375	320	282	260	38	12-30	-	-	450	530
250	568	445	385	345	313	42	12-34	-	-	505	590
300	648	510	450	408	364	46	16-34	-	-	545	620
350	762	570	510	465	422	52	16-34	-	-	640	690
400	838	655	585	535	474	58	16-41	-	-	690	740
450	914	680	610	560	524	60	20-41	-	-	760	810
500	991	755	670	612	576	62	20-48	-	-	850	900

PN6.3 锻钢球阀

JB/T79

公称口径 DN	尺寸Size(mm)										
	L	D	K	d	Y	b	Z-do	Ws	Hs	Hw	Hd
40	241	165	125	95	76	24	4-23	260	140	-	-
50	292	175	135	105	88	26	4-23	260	160	-	-
65	330	200	160	130	110	28	8-23	350	180	-	-
80	356	210	170	140	121	30	8-23	500	220	-	-
100	406	250	200	168	150	32	8-25	800	250	320	430
125	400	295	240	202	176	36	8-30	1000	295	340	450
150	495	340	280	240	204	38	8-34	1200	340	405	480
200	597	405	345	300	260	44	12-34	-	-	450	530
250	673	470	400	352	313	48	12-41	-	-	505	590
300	762	530	460	412	364	54	16-41	-	-	545	620
350	826	595	525	475	422	60	16-41	-	-	640	690
400	902	670	585	525	474	66	16-48	-	-	690	740
500	1054	800	705	640	576	70	20-54	-	-	760	810

PN10 锻钢球阀

JB/T79

公称口径 DN	尺寸Size(mm)										
	L	D	K	d	Y	b	Z-do	Ws	Hs	Hw	Hd
40	241	165	125	95	76	26	4-23	260	160	-	-
50	292	195	145	112	88	28	4-25	350	180	-	-
65	330	220	170	138	110	32	8-25	500	200	-	-
80	356	230	180	148	121	34	8-25	800	240	310	410
100	432	265	210	172	150	38	8-30	1000	270	340	450
125	508	310	250	210	176	42	8-34	1200	320	360	505
150	559	350	290	250	204	46	12-34	-	-	425	555
200	660	430	360	312	260	54	12-41	-	-	470	625
250	787	500	430	382	313	60	12-41	-	-	525	645
300	838	585	500	442	364	70	16-48	-	-	565	715
350	889	665	560	498	422	76	16-54	-	-	670	770
400	991	715	620	558	474	80	16-54	-	-	720	840

锻钢球阀

Forged steel ball valve

A

球阀系列
Ball valve series

PN16 锻钢球阀

JB/T79

公称通径 DN	尺寸Size(mm)										
	L	D	K	d	Y	b	Z-do	Ws	Hs	Hw	Hd
40	305	175	125	92	76	32	4-27	350	160	-	-
50	368	215	165	132	88	36	8-25	500	180	-	-
65	419	245	190	152	110	44	8-30	800	200	-	-
80	381	260	205	168	121	46	8-30	1000	240	310	410
100	457	300	240	200	150	48	8-34	1200	270	340	450
125	559	355	285	238	176	60	8-41	-	-	360	505
150	610	390	318	270	204	66	12-41	-	-	425	560
200	737	480	400	345	260	78	12-48	-	-	530	630
250	838	580	485	425	313	88	12-54	-	-	570	720
300	965	665	570	510	364	100	16-54	-	-	680	780

PN20 锻钢球阀

JB/T79

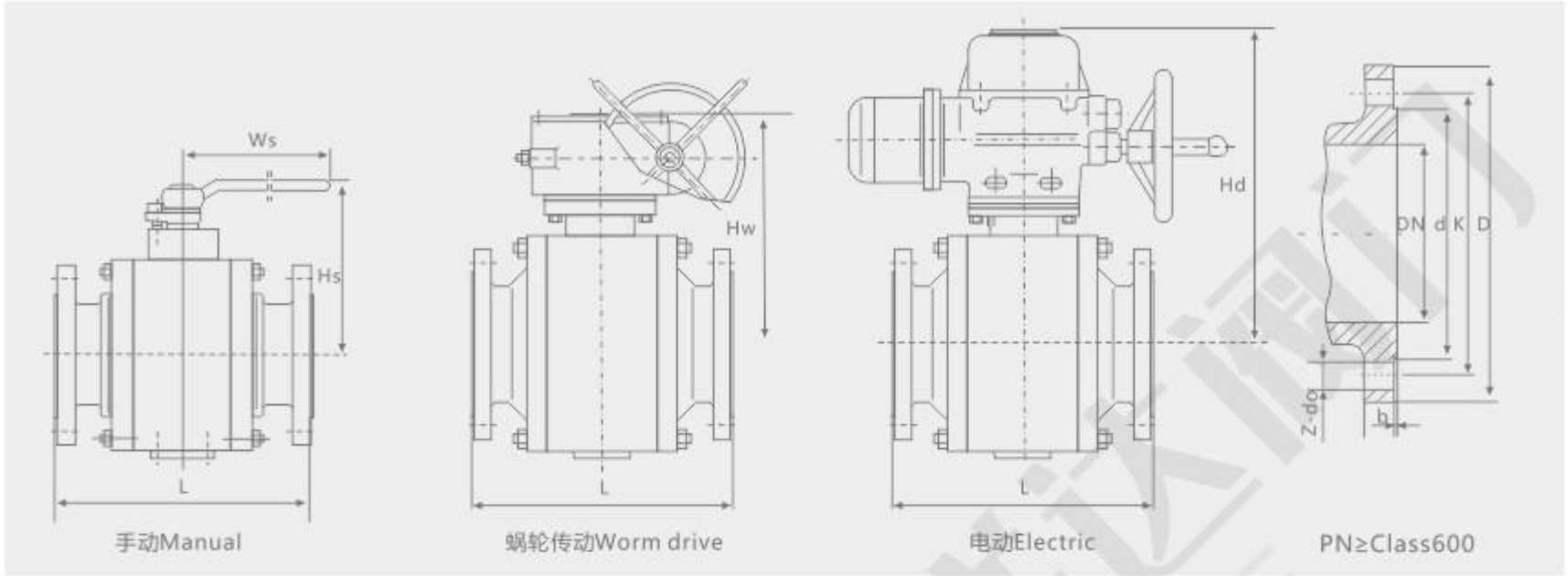
公称通径 DN	尺寸Size(mm)										
	L	D	K	d	Y	b	Z-do	Ws	Hs	Hw	Hd
40	305	170	124	90	56	34	4-27	500	180	-	-
50	368	210	160	128	70	40	8-25	650	200	-	-
65	419	260	203	165	97	48	8-30	800	220	-	-
80	470	290	230	190	116	54	8-34	1000	260	320	420
100	546	360	292	245	138	66	8-41	1200	290	360	470
125	673	385	318	270	170	76	12-41	-	-	380	530
150	705	440	360	305	190	82	12-48	-	-	440	580
200	832	535	440	380	245	92	12-54	-	-	550	650
250	991	670	572	508	319	110	16-58	-	-	590	740

PN25 锻钢球阀

JB/T79

公称通径 DN	尺寸Size(mm)										
	L	D	K	d	Y	b	Z-do	Ws	Hs	Hw	Hd
40	305	180	124	92	68.28	32	4-29.5	500	180	-	-
50	368	215	165	124	95.25	38.5	8-26	650	200	-	-
65	419	245	190.5	137	107.95	41.5	8-29.5	800	220	-	-
80	470	265	203	168	136.52	48	8-32.5	1000	260	320	420
100	546	310	241.5	194	161.92	54	8-35.5	1200	290	360	470
125	673	375	292	229	193.68	73.5	8-42	-	-	380	530
150	705	395	317.5	248	211.12	83	12-39	-	-	440	580
200	832	485	393.5	318	269.88	92	12-45	-	-	550	650

美标锻钢球阀
API forged steel ball valve



Class 150LB 美标锻钢球阀

公称口径 DN	尺寸Size(mm)										
	L	D	K	d	Y	b	Z-do	Ws	Hs	Hw	Hd
1 1/2"	165	125	98.4	73	-	12.7	4-16	230	135	-	-
2"	178	150	120.7	92	-	14.3	4-19	260	150	-	-
2 1/2"	190	180	139.7	105	-	15.9	4-19	350	180	-	-
3"	203	190	152.4	127	-	17.5	4-19	500	195	-	-
4"	229	230	190.5	157	-	22.3	8-19	650	245	310	420
5"	356	255	215.9	186	-	22.3	8-22.5	800	270	330	440
6"	394	280	241.3	216	-	23.9	8-22.5	1000	295	390	470
8"	457	345	298.5	270	-	27.0	8-22.5	-	-	440	510
10"	533	405	362	324	-	28.6	12-25.5	-	-	490	560
12"	610	485	431.8	381	-	30.2	12-25.5	-	-	530	600
14"	686	535	476.3	413	-	33.4	12-28.5	-	-	620	670
16"	762	595	539.8	470	-	35.0	16-28.5	-	-	675	720
18"	864	635	577.9	533	-	38.1	16-32	-	-	740	790
20"	914	700	635	584	-	41.3	20-32	-	-	825	870
24"	1067	815	749.3	692	-	46.3	20-35	-	-	920	960

Class 300LB 美标锻钢球阀

1 1/2"	190	155	114.3	73	-	19.1	4-22.5	230	135	-	-
2"	216	165	127	92	-	20.7	8-19	260	150	-	-
2 1/2"	241	190	149.2	105	-	23.9	8-22.5	350	180	-	-
3"	282	210	168.3	127	-	27.0	8-22.5	500	195	-	-
4"	305	255	200	157	-	30.2	8-22.5	800	250	320	430
5"	356	280	235	186	-	33.4	8-22.5	1000	280	340	450
6"	403	320	269.9	216	-	35.0	12-22.5	1200	300	405	480
8"	502	380	330.2	270	-	39.7	12-25.5	-	-	450	530
10"	568	445	387.4	324	-	46.1	16-28.5	-	-	505	590
12"	648	520	450.8	381	-	49.3	16-32	-	-	545	620
14"	762	585	514.4	413	-	52.4	20-32	-	-	640	690
16"	838	650	571.5	470	-	55.6	20-35	-	-	690	740
18"	914	710	628.6	533	-	58.8	24-35	-	-	760	810
20"	991	775	685.8	584	-	62.0	24-35	-	-	850	900

美标锻钢球阀
API forged steel ball valve

A

球阀系列
Ball valve series

Class 600LB 美标锻钢球阀

公称通径 DN	尺寸Size(mm)										
	L	D	K	d	Y	b	Z-do	Ws	Hs	Hw	Hd
1 1/2"	241	155	114.3	90	68.263	22.3	4-22.5	260	160	-	-
2"	292	165	127	108	82.550	25.4	8-19	350	180	-	-
2 1/2"	330	190	149.2	127	101.600	28.6	8-22.5	500	200	-	-
3"	356	210	168.3	146	123.825	31.8	8-22.5	800	240	310	410
4"	432	275	215.9	175	149.225	38.1	8-25.5	1000	270	340	450
5"	508	330	266.7	210	180.975	44.5	8-28.5	1200	320	360	505
6"	559	355	292.1	241	211.138	47.7	12-28.5	-	-	425	555
8"	660	420	349.2	302	269.876	55.6	12-32	-	-	470	625
10"	787	510	431.8	356	323.851	63.5	16-35	-	-	525	645
12"	838	560	489.0	413	381.001	66.7	20-35	-	-	565	715
14"	889	605	527.0	457	419.101	69.9	20-38	-	-	670	770
16"	991	685	603.2	508	469.901	76.2	20-41	-	-	720	840
18"	1092	745	654.0	575	533.401	82.6	20-44.5	-	-	780	920
20"	1194	815	723.9	635	584.201	88.9	24-44.5	-	-	850	995

Class 900LB 美标锻钢球阀

公称通径 DN	尺寸Size(mm)										
	L	D	K	d	Y	b	Z-do	Ws	Hs	Hw	Hd
1 1/2"	305	180	123.8	73	-	31.8	4-28.5	350	160	-	-
2"	368	215	165.1	92	-	38.1	8-25.5	500	180	-	-
2 1/2"	419	245	190.5	105	-	41.3	8-28.5	800	200	-	-
3"	381	240	190.5	156	123.82	38.1	8-25.5	1000	240	310	410
4"	457	290	235.0	181	149.22	44.5	8-32	1200	270	340	450
5"	559	350	279.4	216	180.98	50.8	8-35	-	-	360	505
6"	610	380	317.5	241	211.12	55.6	12-32	-	-	425	560
8"	737	470	393.7	308	269.88	63.5	12-38	-	-	530	630
10"	838	545	469.9	362	323.85	69.9	16-38	-	-	570	720
12"	965	610	533.4	419	381.00	79.4	20-38	-	-	680	780
14"	1029	640	558.8	467	419.10	85.8	20-41	-	-	800	905
16"	1130	705	616.0	524	469.90	88.9	20-44.5	-	-	910	1010

Class 1500LB 美标锻钢球阀

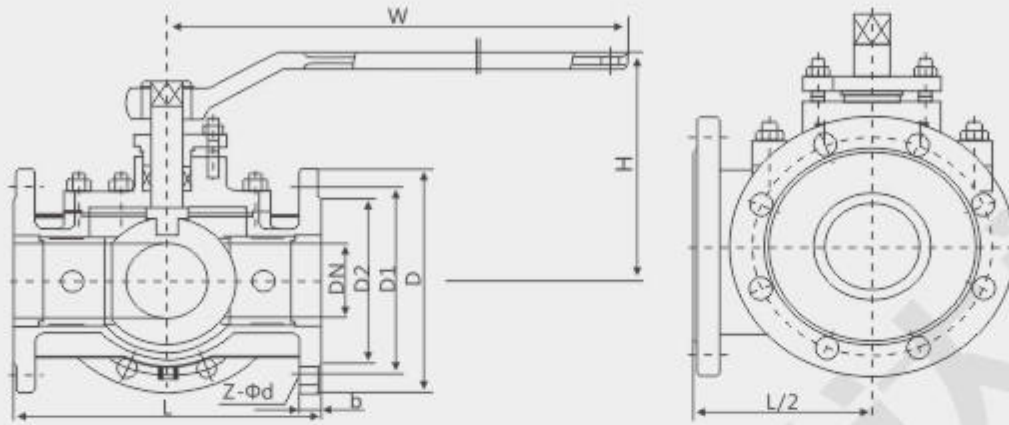
公称通径 DN	尺寸Size(mm)										
	L	D	K	d	Y	b	Z-do	Ws	Hs	Hw	Hd
1 1/2"	305	180	123.8	92	68.28	31.8	4-28.5	500	180	-	-
2"	368	215	165.1	124	95.25	38.1	8-25.5	650	200	-	-
2 1/2"	419	245	190.5	137	107.95	41.3	8-28.5	800	220	-	-
3"	470	265	203.2	168	136.52	47.7	8-32	1000	260	320	420
4"	546	310	241.3	194	161.92	54.0	8-35	1200	290	360	470
5"	673	375	292.1	229	193.68	73.1	8-41	-	-	380	530
6"	705	395	317.5	248	211.12	82.6	12-38	-	-	440	580
8"	832	485	393.7	318	269.88	92.1	12-45	-	-	550	650

A

三通法兰球阀
Three way flange ball valve

球阀系列
Ball valve series

Q44/644/944/45/645/945F-16C/P



"L"型 L-type



"T"型 T-type

PN16 三通法兰球阀

JB/T79

公称通径 DN	主要外形尺寸和连接尺寸(mm) Main external and connection dimensions								WT(kg)
	L	D	D1	D2	b	Z-Φd	H	W	
15	150	95	65	45	14	4-Φ14	95	140	4
20	160	105	75	55	14	4-Φ14	105	160	8
25	180	115	85	65	14	4-Φ14	113	180	7
32	200	135	100	78	16	4-Φ18	135	250	12
40	220	145	110	85	16	4-Φ18	142	300	15
50	240	160	125	100	16	4-Φ18	165	350	20
65	260	180	145	120	18	4-Φ18	175	350	25
80	280	195	160	135	20	8-Φ18	190	400	36
100	320	215	180	155	20	8-Φ18	225	500	51
125	380	245	210	185	22	8-Φ18	245	600	77
150	440	280	240	210	24	8-Φ23	265	800	108
200	550	335	295	265	26	12-Φ23	305	800	126
250	670	405	355	320	30	12-Φ25	370	1300	185

三通法兰球阀
Three way flange ball valve

A

球阀系列
Ball valve series

PN25三通法兰球阀

JB/T79

公称通径 DN	主要外形尺寸和连接尺寸(mm) Main external and connection dimensions								WT(kg)
	L	D	D1	D2	b	Z-Φd	H	W	
15	150	95	65	45	16	4-Φ14	95	100	4
20	160	105	75	55	16	4-Φ14	105	160	5
25	180	115	85	65	16	4-Φ14	113	160	8
32	200	135	100	78	18	4-Φ18	135	250	13
40	220	145	110	85	18	4-Φ18	142	250	19
50	240	160	125	100	20	4-Φ18	154	350	27
65	260	180	145	120	22	8-Φ18	175	350	33
80	280	195	160	135	22	8-Φ18	190	450	40
100	320	230	190	160	24	8-Φ23	225	450	53
125	380	270	220	188	28	8-Φ25	245	600	86
150	440	300	250	218	30	8-Φ25	265	800	113
200	550	360	310	278	34	12-Φ25	305	1200	133
250	670	425	370	332	36	12-Φ30	370	1400	219

PN40三通法兰球阀

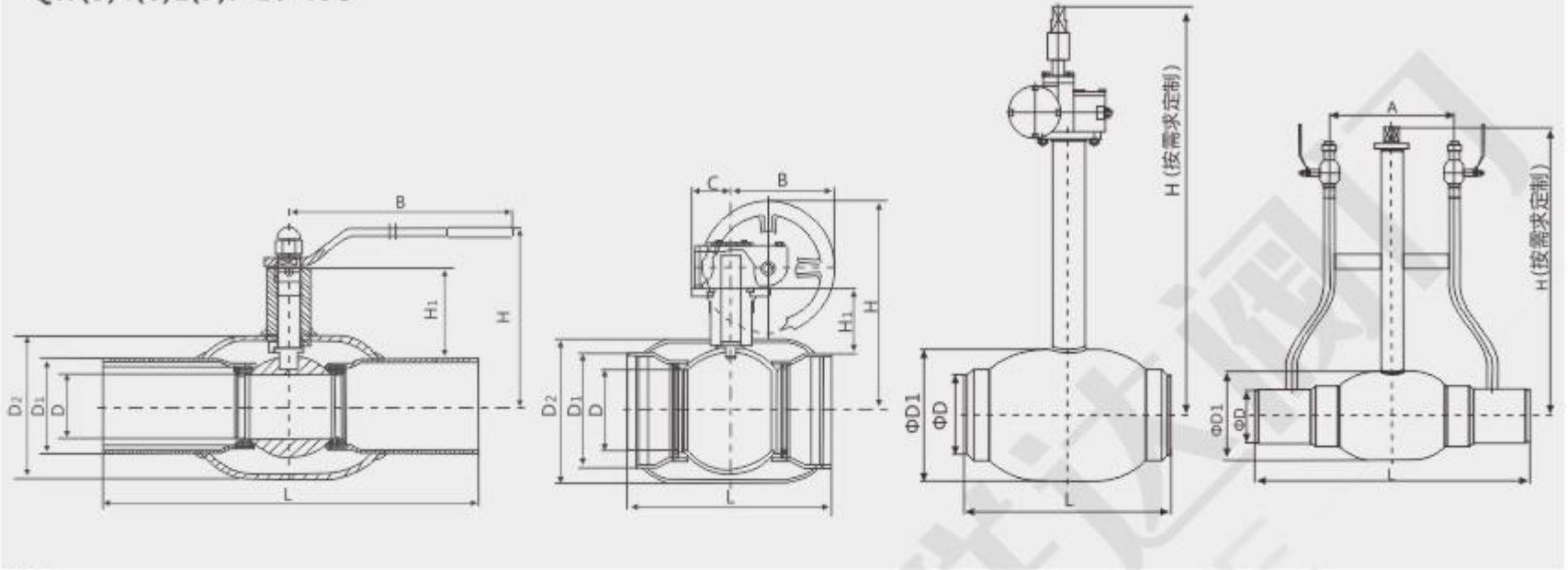
JB/T79

公称通径 DN	主要外形尺寸和连接尺寸(mm) Main external and connection dimensions								WT(kg)
	L	D	D1	D2	D6	b	Z-Φd	H	
15	180	95	65	45	40	16	4-Φ14	100	4
20	190	105	75	55	51	16	4-Φ14	160	5
25	200	115	85	65	58	16	4-Φ14	160	8
32	210	135	100	78	66	18	4-Φ18	250	13
40	230	145	110	85	76	18	4-Φ18	250	19
50	250	160	125	100	88	20	4-Φ18	350	27
80	310	195	160	135	121	22	8-Φ18	450	40
100	350	230	190	160	150	24	8-Φ23	450	53
125	381	270	220	188	176	28	8-Φ25	600	86
150	403	300	250	218	204	30	8-Φ25	800	113
200	502	375	320	282	260	38	12-Φ30	1200	133
250	568	445	385	345	313	42	12-Φ34	1400	219

全焊接球阀

Fully welded ball valve

QW(3)4(6)1(7)F-16-40C



结构

阀门是由全焊的阀体和碳增强特氟隆密封垫组成，可以在频繁操作，有杂质及化学物质情况下长寿命运行。研磨精细的不锈钢球体可以保证多年开闭自如，运行可靠。

采用浮球结构，斜面弹性垫圈保证密封圈紧压在球体之上，即使在压力不稳定的情况下，阀门可以保证严密。

阀杆的防泄漏结构适用两个“O”型圈，使阀杆转动自如且密封严密。

Structure

The valve is composed of a valve body welded and carbon reinforced Teflon gasket, in frequent operation, impurities and chemical substances under the condition of long service life. Grinding fine stainless steel ball can guarantee for many years to open and close, reliable operation.

Adopt floating ball structure, inclined plane elastic washer to ensure that the sealing ring is pressed on the ball, even in the case of unstable pressure, the valve can ensure tight.

The valve stem leakage structure using two "O"-shaped ring, so that the valve stem rotation and sealing.

特性

不需要维护，调整及润滑，易于安装，在低运行费用下长期可靠运行。阀杆可以加长、易于保温。

操作手柄可以拆下，换向安装。

阀体不含沉重且不可靠的铸件。

安装调节机构，非常简便。

Characteristic

Do not need to maintain, adjust and lubrication, easy to install, in the low operating cost of long-term reliable operation.

Valve stem can be lengthened, easy to heat insulation.

The operating handel can be removed and the reverse is installed.

The body does not contain heavy and unreliable castings.

Install regulator, very simple.

主要零件材料 Main components material

序号 No.	零件名称 Part name	材料 Material Science	
1	阀体 Body	碳钢 Carbon steel	ST37.8
2	阀杆室 Stem chamber	碳钢 Carbon steel	Fe52DP
3	球体 Ball	不锈钢 Stainless steel	AISI304
4	阀杆 Stem	不锈钢 Stainless steel	AISI303
5	密封圈 Seal ring	特氟隆 Teflon	PTFE
6	斜面垫圈 Bevel washer	弹簧钢 Spring steel	
7	支撑 Support	不锈钢 Stainless steel	
8	螺丝 Screw	钢 Steel	
9	O形密封圈 O-sealing ring	合成橡胶 Synthetic rubber	FPM
10	垫圈 Gasket	特氟隆 Teflon	PTFE
11	止退垫圈 Floor clip	铸钢 Cast steel	AISI304
12	手柄 Handle	镀锌钢 Galvanized steel	

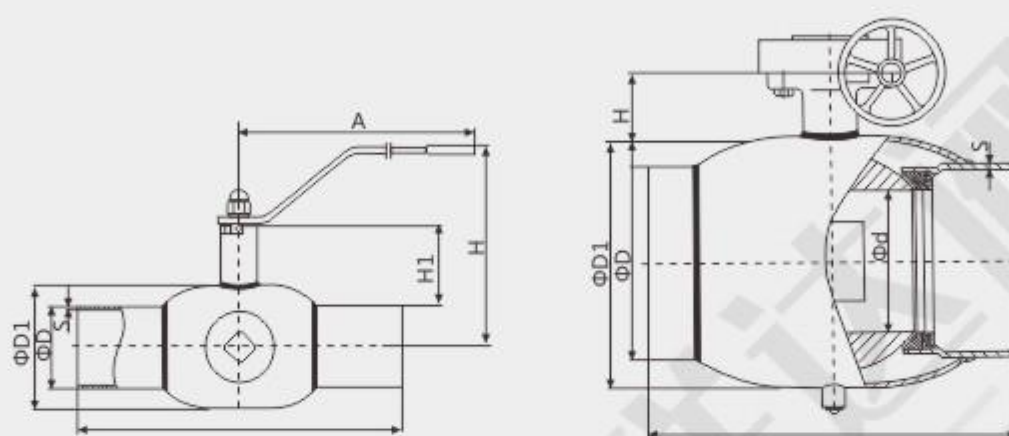
滤网焊接球阀

Filter mesh welded ball valve

A

球阀系列
Ball valve series

QP361F-25CS/QP61F-25CS



基本参数 Basic parameters

规格 Specifications	DN65-DN400	Size	DN65-DN400
工作压力 Working pressure	PN25	Working pressure	PN25
温度范围 Temperature range	-40°C-200°C	Temperature range	-40°C-200°C

尺寸参数 Size parameters (mm)

PN25 滤网焊接球阀

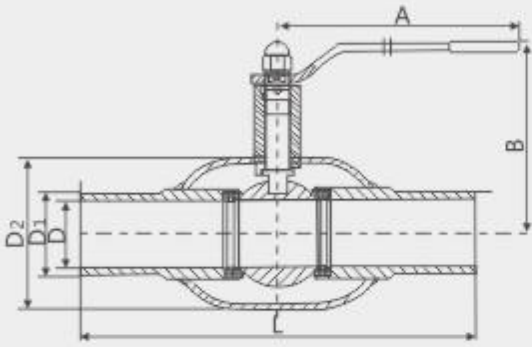
口径 (Size)	压力 (PN)	L	A	H	H1	D1	D(DIN)	D(GB)	S
DN65	25	300	275	183	74	114.3	76.1	73	3.5
DN80	25	300	275	196	80	139.7	88.9	89	4
DN100	25	325	275	219	100	168.3	114.3	108	4.5

PN25 滤网焊接球阀

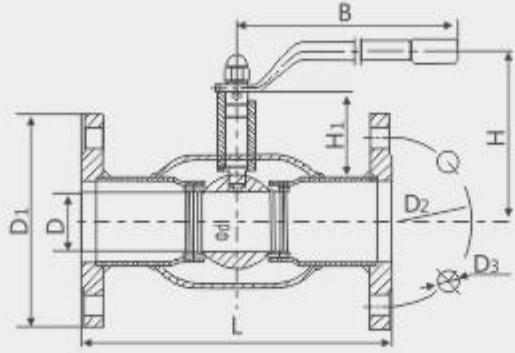
口径 (Size)	压力 (PN)	L	d	D1	D(DIN)	D(GB)	S	H
DN125	25	352	100	177.8	139.7	133	5	92
DN150	25	350	125	219.1	168.3	159	6	112
DN200	25	400	150	273	219.1	219	7	95
DN250	25	530	200	355.6	273	273	8	126
DN300	25	640	250	426	323.9	325	9	149
DN350	25	686	290	508	355.6	377	10	167
DN400	25	762	350	558.8	406.4	426	12	184

全焊接球阀
Fully welded ball valve

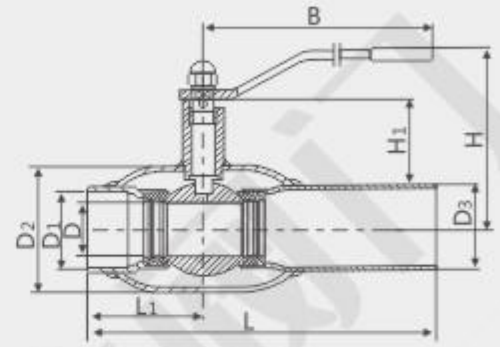
QW(3)4(6)1(7)F-16-40C



全径/焊接 Full diameter/Welding



缩径/法兰 Shrinkage/Flange



缩径/螺纹&焊接 Shrinkage/Screw & Welding

PN16/PN25/PN40 全焊接球阀 (全径/焊接)

DN	L	D	D1	D2	A	H	B	H1
10	210	15	21.7	42.7	129	103	64	22
15	230	20	27.2	48	159	118	76	23
20	260	25	34.0	60	159	121	85	34
25	260	32	42.7	76	230	120	95	33
32	300	40	48.6	89	230	127	100	43
40	300	50	60.5	114	300	170	159	44
50	300	65	76.3	140	300	185	170	71

PN16/PN25 全焊接球阀 (全径/焊接)

DN	L	D	D1	D2	A	H	B	H1
65	300	80	89.1	165	400	210	192	77
80	325	100	114.3	216	400	253	208	102
100	350	125	139.8	219	450	273	241	101
125	490	150	165.2	355	450	300	280	107
150	580	200	216.3	356	252	325	500	123
200	550	250	267.4	457	236	345	500	122
250	630	300	318.5	508	331	465	600	155
300	762	337	355.6	559	331	530	600	187
400	840	387	406.4	660	360	550	700	221
500	990	490	508.0	830	413	630	800	211
600	1140	590	610	982	506	830	-	-
700	1346	690	711	1086	605	910	-	-
800	1524	790	813	1245	659	1025	-	-
900	1727	890	914	1433	881	1165	-	-
1000	1950	980	1016	1576	1092	1170	-	-
1200	2250	1180	1219	1939	1092	1180	-	-